





Luci Series


Features

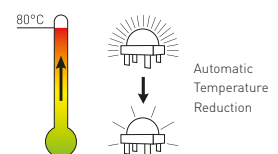
Lumen Output	Up to 18.673 lm
Input Power	Up to 176W
Efficacy	Up to 115 lm/W
Colour Temperature (CCT)	4000K / 5700K
Colour Rendering Index (CRI)	85 / 75
Rated Life	100.000 Hours*
Daylight Sensor (DLS)	Yes
Motion Sensor	Passive Infra Red
Housing	PC-ABS white, Anodized Aluminium
Optic	PMMA
Mounting Options	Surface, Recessed
Dimensions	326 x 326 x 98 mm
Number of LED's	40 / 50 / 80
Operating Temperature	-30 °C to +60 °C**
Power Supply	integrated 200 W
Connection cable	1500mm EPR extra flexibility (-40 °C + 90 °C), UV resistant
Voltage	90 - 305 VAC @ 47 - 63 Hz 127 - 431 VDC
Rated Input Current	120V - 1.25A 305V - 0.54A
Power Factor	0.97 typical
Safety Class	I
Overload Protection (LIPS)	Yes
Weight	7,2 kg
AC Harmonics	Less than 10% THD compliant to EN55015
Warranty	5 years

Benefits

- + Intelligent dimming.
- + Unique and programmable flexibility.
- + Easy Installation: Click & Lock surface mounting plate.
- + Built-in smart technology:
 - Motion sensor (7 meter).
 - Daylight sensor.
 - Status indicator, showing the actual status of the Luminaire.
 - Luminaire Intelligent Protection System (LIPS). 
 - Active Overheat Protection (AOP). 
 - Light Normalizer – No Lumen drop during lifetime (> 100.000 hrs).
- + Wirelessly Accessible & Controllable with the Bever Control Pad.
- + A wide range of optics is available for the ideal lighting solution, by delivering exactly the right amount of light where needed.
- + Protected against dust and water intrusions, IP67

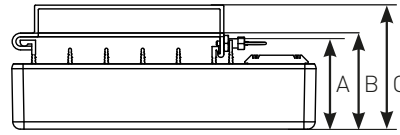
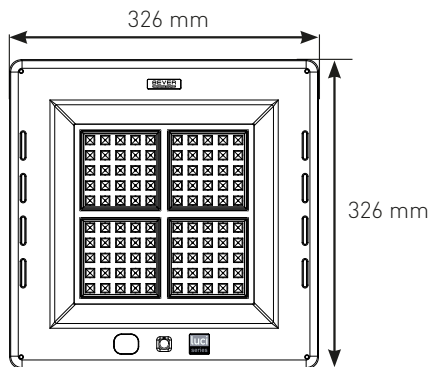
* L70/B10 (80 LED), L85/B10 (40/50 LED) at 25 °C constant ambient temperature, constant full power.

** Active Overheat Protection above 80 °C at PCB 



Bever_SPEC_Luci Series-GB_2017-05-03

Dimensions



A recessed*	=	98 mm
B surface mounted (low profile)	=	103 mm
C surface mounted (standard profile)	=	133 mm

* Optional recessed brackets available.

Ordering information

Article number	Nomenclature	Optics	Default Power	Default Lumen	Default Efficacy	Max. Power	Max. Lumen	CCT	CRI
Luci Series 40 LED									
15138	Luci02-S-MB01-40LED-T- 76W (5700K)		76 W	8723 lm	115 lm/W	91 W	10124 lm	5700K	75
Luci Series 50 LED									
14974	Luci02-S-MB01-50LED-T- 105W (4000K)		105 W	10778 lm	103 lm/W	125 W	12398 lm	4000K	85
14976	Luci02-A-MB02-50LED-T- 105W (4000K)		105 W	11048 lm	105 lm/W	125 W	12763 lm	4000K	85
14978	Luci02-S-MB01-50LED-T- 105W (5700K)		105 W	11542 lm	110 lm/W	125 W	13355 lm	5700K	75
14980	Luci02-A-MB02-50LED-T- 105W (5700K)		105 W	11829 lm	113 lm/W	125 W	13666 lm	5700K	75
Luci Series 80 LED									
14973	Luci02-S-MB01-80LED-T- 149W (4000K)		146 W	15078 lm	103 lm/W	176 W	17401 lm	4000K	85
14975	Luci02-A-MB02-80LED-T- 149W (4000K)		146 W	14943 lm	102 lm/W	176 W	17246 lm	4000K	85
14977	Luci02-S-MB01-80LED-T- 149W (5700K)		146 W	16145 lm	111 lm/W	176 W	18673 lm	5700K	75
14979	Luci02-A-MB02-80LED-T- 149W (5700K)		146 W	16000 lm	110 lm/W	176 W	18506 lm	5700K	75

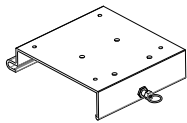


Accessories

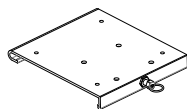
15001	OPT-RemoteControl-LUCI-Nexus7-International
Surface Mounted	
13135	High Mounting plate for Surface mounting
12996	Low Mounting plate for Surface mounting
Recessed Mounted	
13406	Recessed frame for new canopies and retrofit of Philips Mini 300 (hole 360x360 mm)
11726	Recessed frame for retrofit of Philips MPF (hole 470x470 mm)
13742	Recessed frame for retrofit of Cube (hole 380x380 mm)
13746	Recessed frame for retrofit (hole 600x600 mm)
13738	Recessed frame for retrofit of Parkersell Canolux (hole 560x410 mm)



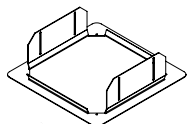
15001 Control Pad



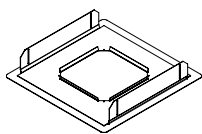
13135 Luci Series + High Mounting Plate = 133 mm high



12996 Luci Series + Low Mounting Plate = 103 mm high



13406 Philips Mini 300 (hole 360x360 mm)



11726 Philips MPF (hole 470x470 mm)
 13742 Cube (hole 380x380 mm)
 13746 Retrofit (hole 600x600 mm)
 13738 Parkersell Canolux (hole 560x410 mm)

Compliances Luci Series

IEC 60598-1

IEC 60598-2-1

IEC 60598-2-2

IEC 62471:2008

EMC directive 2004/108/EC:

- EN 55015:2006 +A1:2007, +A2:2009

- EN 61000-3-2:2006 +A1:2009, +A2:2009

- EN 61000-3-3:2008

- EN 61547:2009

o EN 61000-4-2:2009

o EN 61000-4-3:2006 +A1:2008, +A2:2010

o EN 61000-4-4:2004, +A1:2010

o EN 61000-4-5:2006

o EN 61000-4-6:2009

o EN 61000-4-11:2004

Luminaires - Part 1: General requirements and tests

Luminaires - Part 2-1: Particular requirements - Fixed general purpose luminaires

Luminaires - Part 2-2: Particular requirements - Recessed luminaires

Photobiological safety of lamps and lamp systems

Limits and methods of measurement of radio disturbance of electrical lighting and similar equipment

Harmonic current emissions

Limitation of voltage fluctuations

Equipment for general lighting purposes. EMC immunity requirements. From witch:

Electrostatic discharge (ESD) immunity

Radiated EM field immunity

Electrical fast transient (EFT) immunity

Surge transient immunity

Conducted Radio-frequency disturbance immunity

Immunity to voltage dips and short interrupts.